

# Activity A26

## Role play scenario cards

### EMERGENCY SCENARIO

- Select a scenario card and read what has happened.
- You must then role play the situation, including the call to 999/112 if is necessary.
- During your role play, remember to answer the following:
  - Are there any dangers?
  - Is the incident serious or minor?
  - Do you need to call for help?
  - Which service(s) do you need to call?

## Scenario 1

You walk into school early one day and see that the caretaker is lying in the school garage.

He looks unwell and doesn't reply when you call out to him. His eyes are closed, and you can see he has a cut on his head.

You can see that the ceiling lights he has been working on are hanging down and there are sparks coming from them. Also, there are lots of cans of chemicals in the garage with some lids on and off.



## Scenario 2

You are walking your dog along a lane and notice a young boy who has fallen off his bike. He has a sore leg and is crying. He can sit up but does not want to stand as his leg hurts too much. He is upset and cold.



### Scenario 3

You are walking home, and it is just starting to get dark. You hear someone call out to you. When you look around you can see that there is a child who is sitting on top of a garage roof. They have climbed up on to the garage roof to fetch their ball but are now saying that they are stuck and too scared to climb back down. They have a graze on their arm.



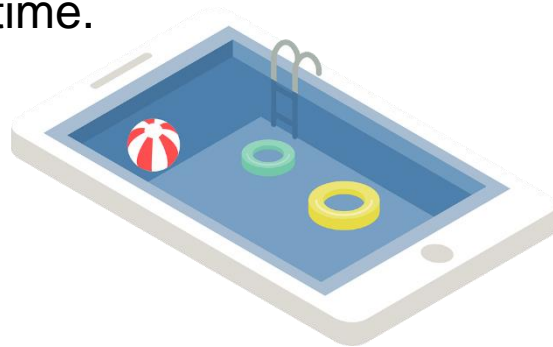
## Scenario 4

You are playing outside with your friends. A lady who lives in your street approaches you saying that she can strongly smell gas in her house. She is not sure what to do about it.



## Scenario 5

You are on the way to the swimming pool. As you pass through an area where building work is going on, you notice some smoke coming from a small building on the site. There is nobody else around. The site has lots of different materials on the floor and stacked up. There are no workmen around at this time.



## Scenario 6

You are walking your dog along the beach. As you look out to sea you notice a kayak with two young boys in it. They are quite far out and are trying their best to wave at you. Nobody else is near to where you are on the beach. The sea is quite choppy.



## Scenario 7

You are walking through the park when you come across someone lying on the grass. There is no-one else around and the person isn't moving.





## Scenario 8

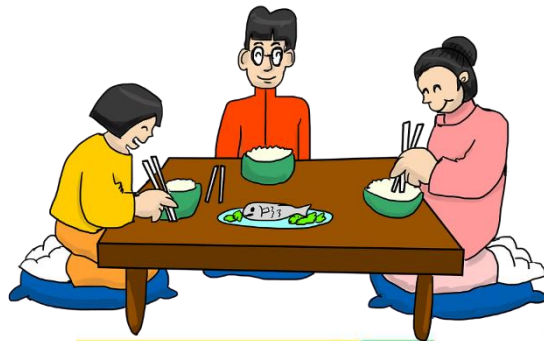
You are out jogging, you come across another man jogging but he has stopped and seems very out of breath. As you pass him, you notice he does not look well. You ask if he is okay. He replies that he feels breathless and has a pain in his chest. He looks very pale and says he feels sick.



## Scenario 9

You are out with friends eating a meal. As you are eating your food your friend says they feel unwell.

You notice that they have gone red in the face and that there is swelling around their eyes and their lips. Their breathing starts to become a bit wheezy as well.



## Scenario 10

You are at the local skatepark. As you stop for a break from your skating, you notice a girl sitting on a bench who is very quiet and has an inhaler in her hand. Her breathing seems quite fast and she sounds wheezy.

